

# Parking *trend*



www.europeanparking.eu

## international

publication of the European Parking Association | Volume 25 | no. 2-2011

**EPA  
Awards 2011**  
all 34  
participants  
- part II -

Pay with Maestro®. So Simple.

\* Story on page 24

**36 EPA-Polis Parking Workshop**  
Improving urban mobility

**29 15th EPA Congress in Torino**  
The scientific programme

**42 Car parks and archaeology**  
How operators generate added value



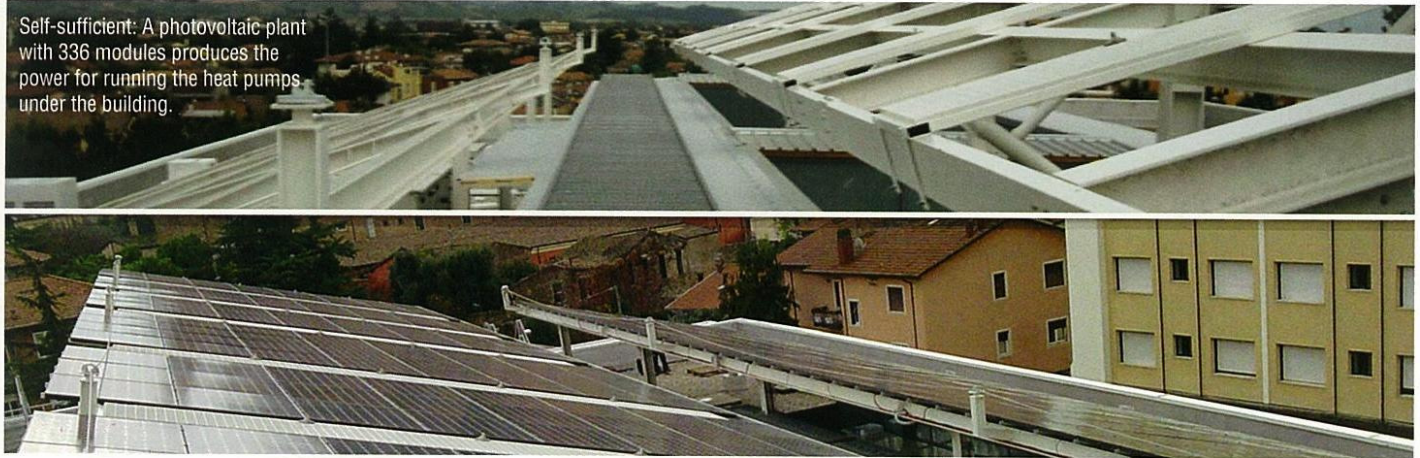




# Cesena | Italy application by Parcheggi SPA

## Self-sufficient car park

Self-sufficient: A photovoltaic plant with 336 modules produces the power for running the heat pumps under the building.



Self-energy resources, fast payment gates and low management costs are the outstanding characteristics of this multi-storey car park in Cesena. It is suitable for 326 cars and represents an exchange point for vehicles' and pedestrians' mobility within Cesena's old town centre. High efficiency photovoltaic plants installed on the roof produce enough electricity to satisfy the facility's needs and to feed two heat pumps of a geothermal plant.

The "IV Novembre Car Park" has been designed, built and managed in a sustainable and efficient way. Photovoltaic and geothermal renewable energies have been integrated in the project. Underneath the car park 40 probes are drilled 125 metres deep in the ground. Two heat pumps are delivering the geothermal energy into the building and even to third parties. A photovoltaic plant with 336 modules produces the power for running the pumps. The building includes four levels in a pre-casted building. The lighting system employs low-energy lamps with an open-



Local Schools Awards "Colora l'Energia": Awareness of alternative energies employed by the car park

rating device that optimizes consumption according to the number of people present and to the time, of day.

These installations allow to nullify CO<sub>2</sub> emissions. But the idea of a self-sufficient car park includes also to minimize the bill costs and the total amortization of the building cost with remarkable economic advantages. In order to avoid cash circulation, customers pay by means of prepaid cards, "fast pay cards" or credit cards.

### Fully automatic

The "automatic car park" furthermore is equipped with a system that automatically enables entry and exit of the users. Surveillance, customer service, intervention in case of alarms and emergencies are managed by remotely – also the revenue management and reports. The operating centre is available 24 hours. Supervision is performed by CCTV. Audio helping points allow the operators to assist users in case of need.



Opening: 23 of June 2010

"Automatic car park": Surveillance, customer service, intervention in case of alarms and emergencies are managed by remote.

